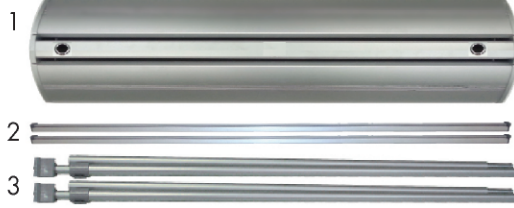


Deluxe Pro Retractor - Double Sided 46.5"

Product Parts

- 1 - Base
- 2 - Banner Rail (x2)
- 3 - Telescoping Poles (x2)



Display Set-up

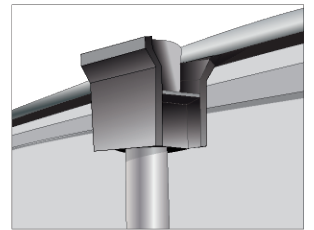
Step 1

Assemble the shock cord portion of the Telescoping Poles (3). Insert the bottom of the Telescoping Poles into the holes in the Base (1). Ensure each pole is seated completely into the bottom of the base.



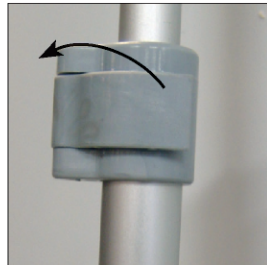
Step 2

Stand facing the back of the Base (1) and gently lift one of the Snap Banner Rails (2) up. Gently tilt the Base back if needed to attach the Pole's (3) top connector into the rear groove on the Snap Banner Rail where the "insert" sticker is located. Repeat for the opposite side.



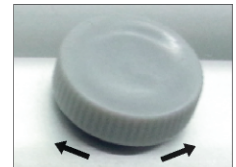
Step 3

To adjust the height, open the Flip Lever on the Telescoping Poles (3) and adjust to the desired height, close the lever to secure your pole height.



Step 4

If unit is un-level, adjust the four feet up or down by turning them.



Storage & Care

Place all product parts into Carry Case and store in a cool dry location. To clean non-graphic hardware, wipe with a damp cloth.

Deluxe Pro Retractor - Double Sided 46.5"

Banner Install/Replacement ONLY

Product Parts

- 1 - Base
- 2 - Banner Rail (x2)
- 3 - Flip Lever Telescoping Poles (x2)
- 4 - Pin (x2)



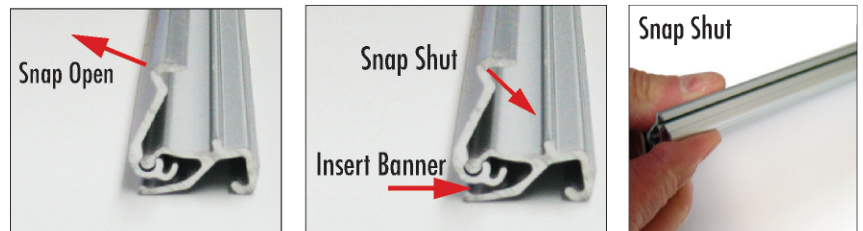
Graphic Removal

Locate the Tension Pins (4) on your retractor. Hold the Base (1) firmly and carefully pull the banners completely out of the Base to expose the leader beyond the original banner. With tension on the banner, insert the Pin into the hole on the side of the Base to prevent the banner from retracting (see step 3 for Pin placement). If done correctly, there will be no tension on the banner and it can be removed from the leader. Repeat for the opposite side and follow Banner Installation.

Banner Installation

Step 1

Remove both End Caps from the Snap Banner Rails (2) and snap the clamp open. Fully insert the top edge of the banner into the groove of the Snap Banner Rail and snap it closed.



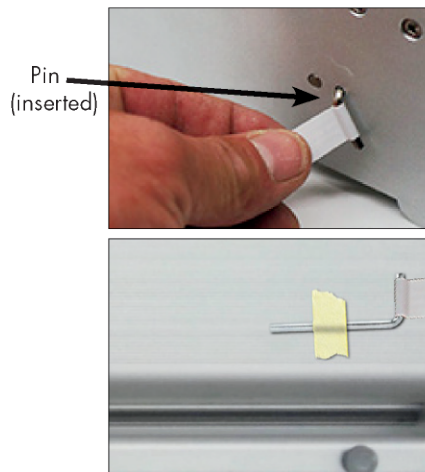
Step 2

For each banner, lay it flat, aligned with the Base's (1) leader. Firmly and evenly press the hook of the leader onto the loop on the banner.



Step 3

Hold one Snap Banner Rail firmly to create tension on the banner, and slowly remove the corresponding pin (4). Allow the banner to gently and evenly roll into the Base (1), avoiding contact with the edges.



Freefall of the banner will likely result in damage to the banner and loss of tension.

Store the Tension Pin (4) on the Base (1) for future graphic changes and repeat for the other banner.